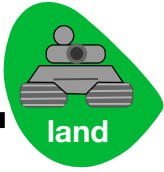




MODEL: CT3G

AR-CT3G LEO 2A4



Description:

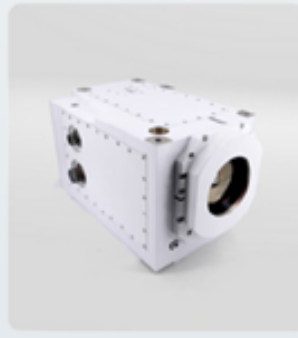


Third Generation Thermal Camera (CT3G) equipped with a third generation cooled LWIR sensor; it offers a combination of high sensitivity and exceptional performance in extreme conditions.

Its main features include a high-sensitivity sensor with a resolution of 640x512, which together with the continuous zoom optics provides a detection capability of up to 7600m. Thanks to the advanced functions of continuous zoom, auto/manual focus, an accurate and flexible display is guaranteed for the operator.

This camera is fully integrated electrically and functionally with the Fire Control System (FCS) of the Leopard 2A4 tank.

MIL-STD
compliant
equipment
ensures reliability
in demanding
military
environments
. Fully integrated
into the Fire
Control System
del Carro de
Combate
Leopard 2A4



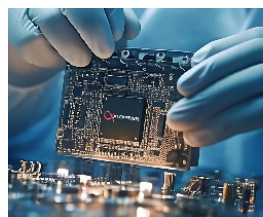
Characteristics:

Quality of Image



Thanks to its high thermal sensitivity and high resolution in the visible spectrum, it produces clear and sharp images in low visibility conditions.

Advanced functions



A high-capacity motherboard enables high processing speed. With an RS232/Ethernet communication interface it is easily integrated into shielded enclosures.

Ergonomics



An additional monitor can be provided for the Marksman's Post eliminating the need to aim through the old optical eyepiece. Optionally, a monitor can be installed for the Carriage Master's Post.

**GENERAL:****Characteristics:****Characteristics:****THERMAL VIDEO****VIDEO CHARACTERISTICS**

Automatic image optimisation algorithms

White/Hot Black/Hot polarity control

Motorised zoom and focus optics

Reticle generation and overlays

Dual HD-SDI video output with 12VDC power supply on the same connector.

Ethernet/RS422 remote control

Level and gain adjustment

External software upgrade according to requirements

Built-in high resolution binoculars

H.264 video output

Full integration with the marksman's periscope and the controls of the battle tank itself.

ENVIRONMENTAL CONDITIONS

Working Temperature [-32°C +50°C]

Storage Temperature [-40°C +75°C]

Compliant with MIL-STD- 810G

IP66

ELECTRICAL CHARACTERISTICS

Complies with MIL-STD-1275

External power supply [18-32VDC]

WEIGHT AND DIMENSIONS

Dimensions:

(W x H x L) [195 x 192 x 390 mm]

Weight 13 kg

Internal Li-Ion batteries [Autonomy of 3 hours]

DETECTOR AND OPTICAL CHARACTERISTICS

Cooled LWIR detector

Resolution 640x512

Cooling time less than 6 minutes

Continuous zoom and focus

WFOV 9,15°

NFOV 3,1°

DETECTION RECOGNITION IDENTIFICATION (DRI) TARGET (1.8M X 0.5M)

Detection 7.600 mm

Recognition 1.900 mm

Identification 950 mm

**Characteristics:****ACCESSORIES**

High-resolution external monitor for Gunner's Station

High-resolution external monitor for Commander's Station

